

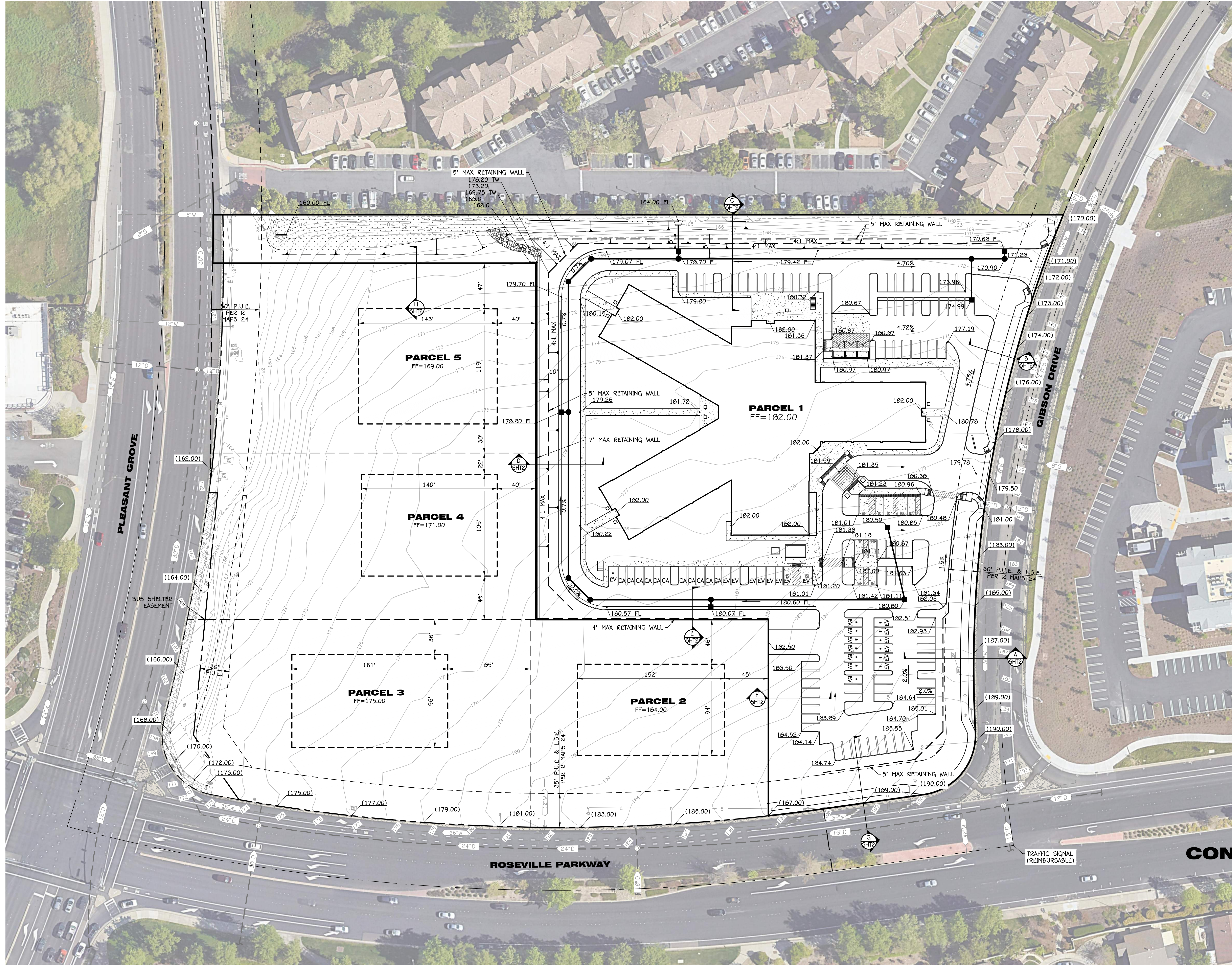
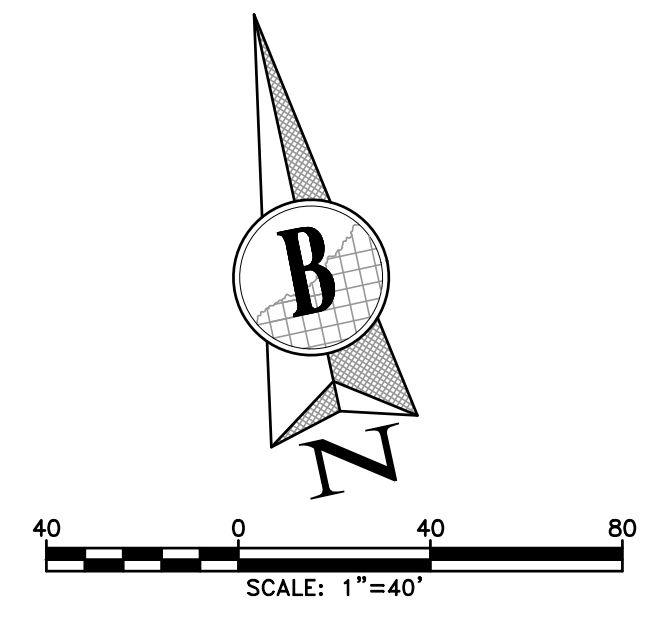
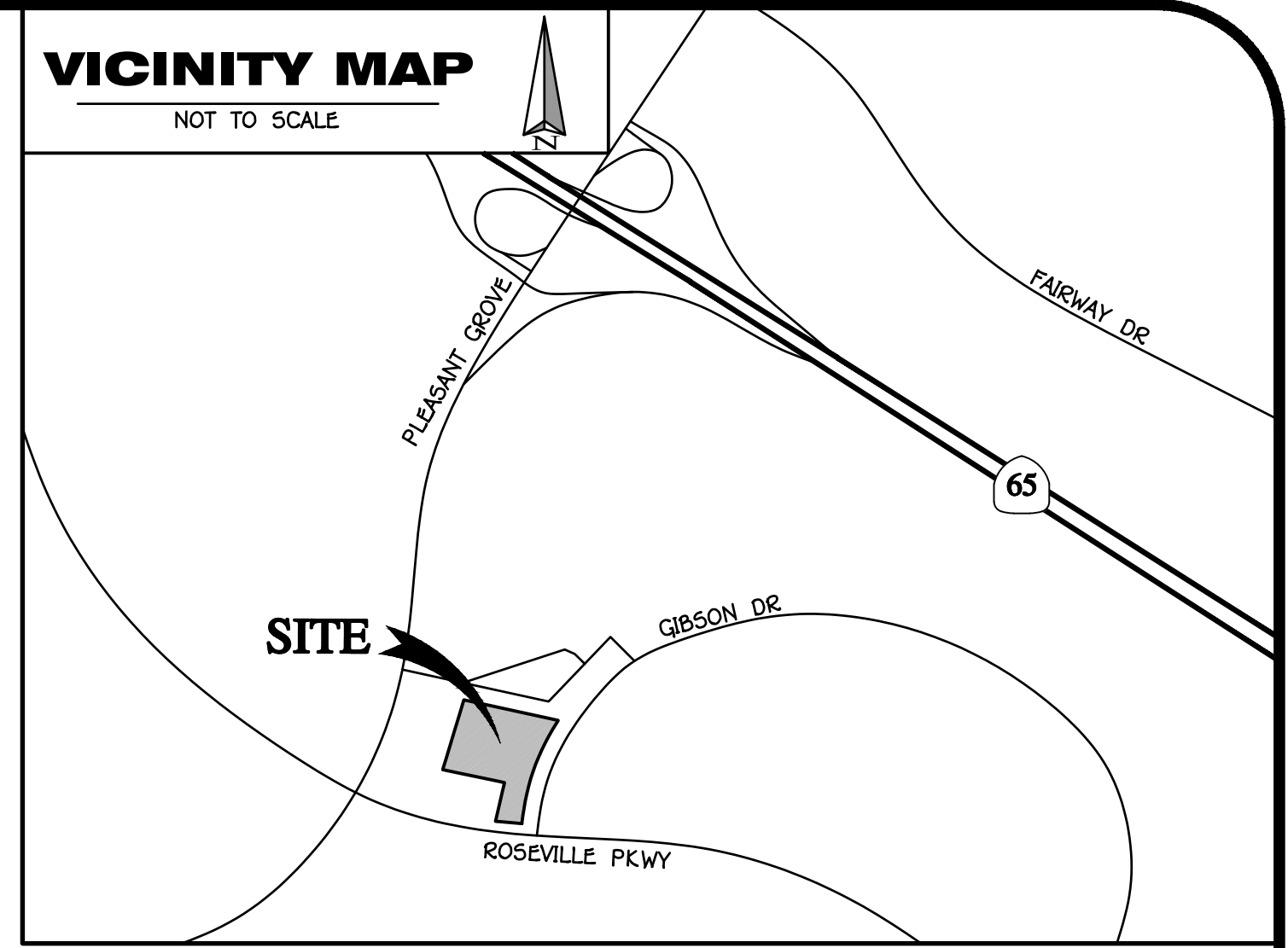
DC EXHIBIT C

PRELIMINARY GRADING PLAN FOR: CONTINUUM CARE - ROSEVILLE 960 GIBSON DRIVE

CITY OF ROSEVILLE

CALIFORNIA

VICINITY MAP NOT TO SCALE



LEGEND

DESCRIPTIONS	(P) PROPOSED	(E) EXISTING
STORM DRAIN		
SANITARY SEWER		
WATER MAIN		
FIRE SERVICE		
CENTERLINE		
RIGHT OF WAY LINE		
BOUNDARY LINE		
ELECTRICAL LINE		
GAS LINE		
TELEPHONE LINE		
JOINT TRENCH		
FENCE		
RETAINING WALL		
SIDEWALK WITH CURB AND GUTTER		
MANHOLE		
DRAIN INLET		
METERED WATER SERVICE		
FIRE HYDRANT		
BLOWOFF VALVE		
GATE VALVE		
BUTTERFLY VALVE		
TYPE 'A' STREET LIGHT		
TYPE 'B' STREET LIGHT		
TRAFFIC SIGNAL		
TRANSFORMER		
PULLBOX		
UTILITY SERVICE PEDESTAL		
UTILITY POLE		
GUY WIRE		
4 SIDED STREET SIGN		
SIGN		
DIRECTION OF FLOW		
FLOWLINE		
SWALE		
PAD ELEVATION		
ELEVATION		
2:1 SLOPE UNLESS NOTED OTHERWISE		
TREE TO BE REMOVED		
TREE TO REMAIN, CONSTRUCT TEMPORARY FENCE		

PRELIMINARY GRADING PLAN FOR:
CONTINUUM CARE - ROSEVILLE
960 GIBSON DRIVE
SEPTEMBER 8, 2023
REVISED JUNE 14, 2024
SHEET 1 OF 3



1001 Enterprise Way, Suite 100 Roseville, CA 95678 (916) 783-8898

ALL INFORMATION AND DATA ON THIS PLAN IS BASED ON THE RECORD DRAWINGS AND SURVEY DATA PROVIDED BY THE CLIENT. THE ENGINEER HAS CONDUCTED VISUAL GENERAL VERIFICATION OF THE DATA AND HAS FOUND IT TO BE REASONABLY ACCURATE. THE ENGINEER DOES NOT WARRANT THE ACCURACY OF THE DATA OR THE RESULTS OF THE VERIFICATION. THE ENGINEER'S LIABILITY IS LIMITED TO THE PROFESSIONAL SERVICES PROVIDED BY THE ENGINEER. THE ENGINEER IS NOT RESPONSIBLE FOR ANY CONSTRUCTION DEFECTS OR OMISSIONS. THE ENGINEER'S LIABILITY IS LIMITED TO THE PROFESSIONAL SERVICES PROVIDED BY THE ENGINEER. THE ENGINEER IS NOT RESPONSIBLE FOR ANY CONSTRUCTION DEFECTS OR OMISSIONS.

S:\Proj\2597\ang\Planning\POIP\2597-FSP.dwg, 06/14/24, 04:48:08pm, Chatterjee

